

Light efficiency:



Light quality:



Color temperature:



Output: 676 lm

Peak: 609 cd

Power: 7.5 W

PF: 1.0



Product name:

Arcane Module, 3000K, CRI80, 700mA, LV-100%

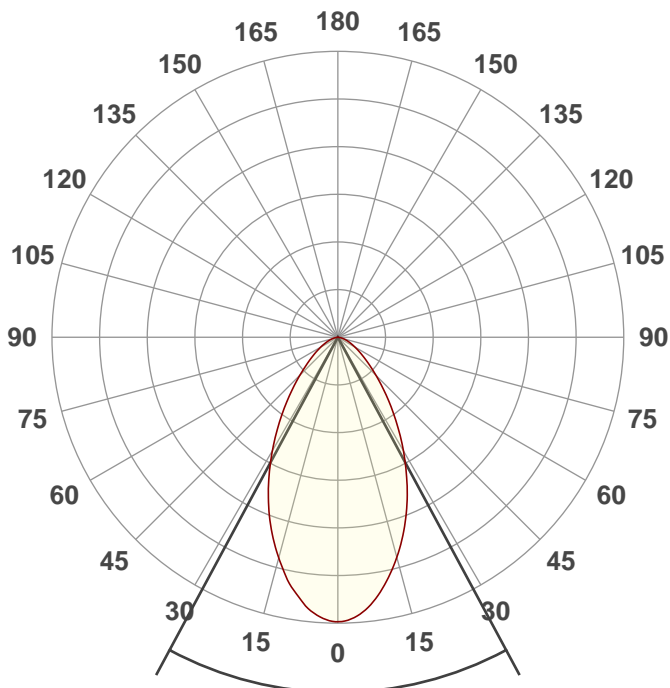
Item number:

ARC-60-130-30-80

Date and time:

16/07/2018 13:15:18

Description:



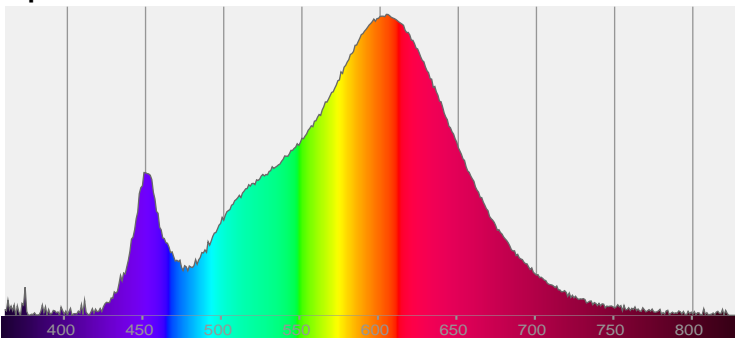
Beam angle

56.6°

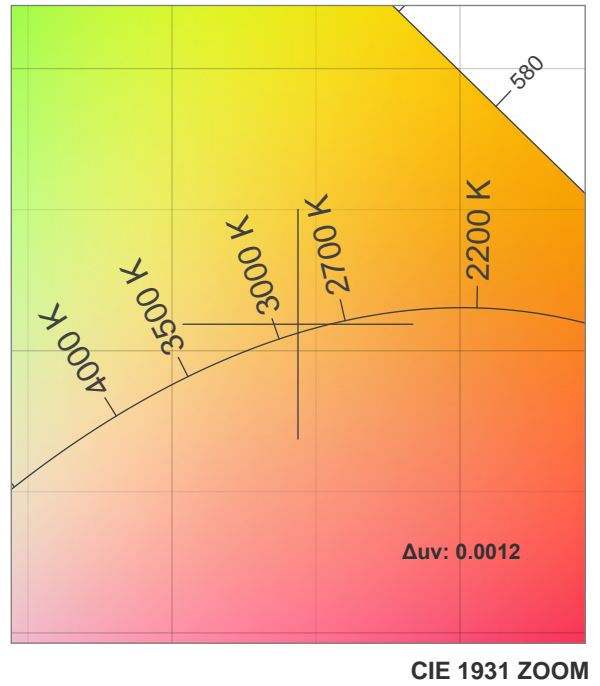
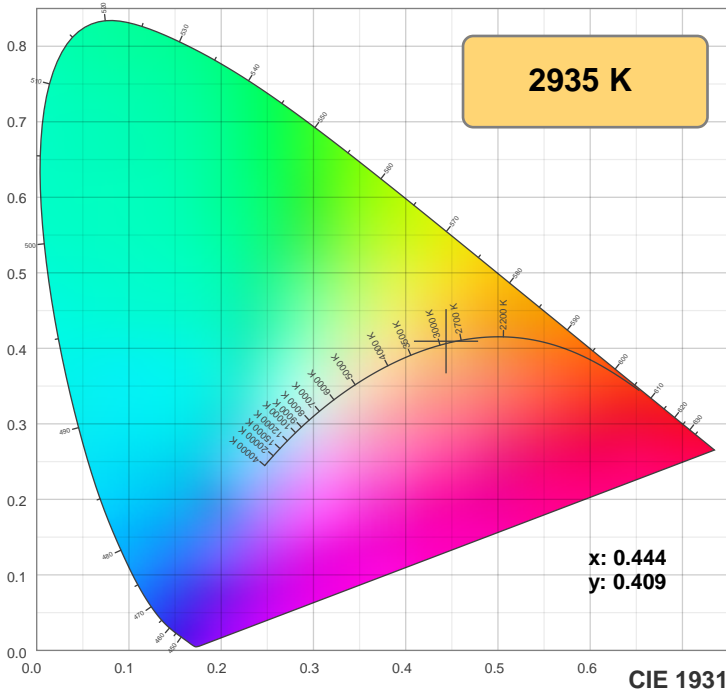


CIE 1931
x: 0.444
y: 0.409

Spectra

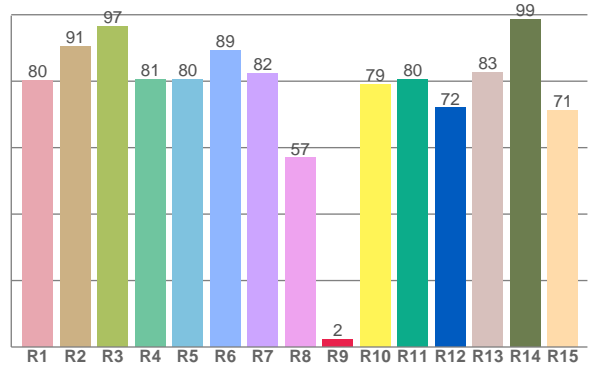
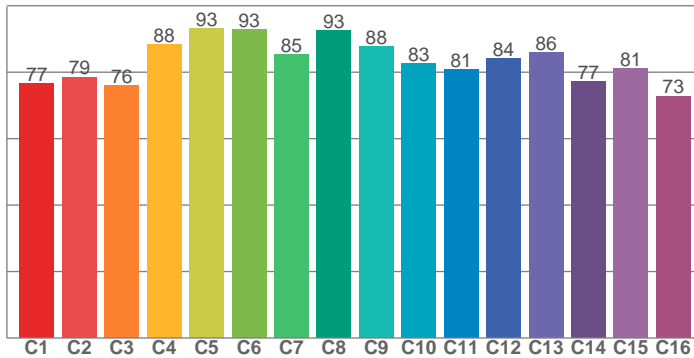


Color details

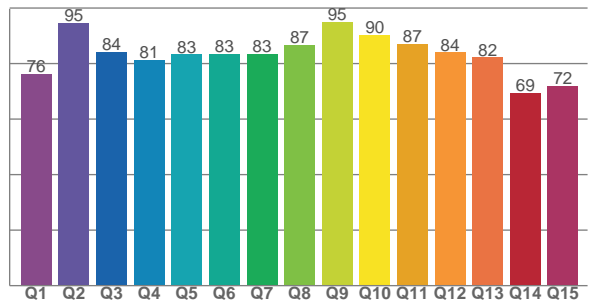


TM30: 83.3

CRI: 82.1 (R1-R8)



CQS: 82.0



CRI R values, only R1-R8 are used to calculate final CRI value

R1	R2	R3	R4	R5	R6	R7	R8	R9	R10	R11	R12	R13	R14	R15
80.1	90.5	96.6	80.6	80.5	89.1	82.2	56.9	2.2	79.0	80.5	71.9	82.6	98.7	71.1

TM30 C values, 16 binned values out of total of 99 C values

C1	C2	C3	C4	C5	C6	C7	C8	C9	C10	C11	C12	C13	C14	C15	C16
76.6	78.5	76.0	88.3	93.1	92.8	85.4	92.6	87.6	82.7	80.8	84.0	86.0	77.3	81.2	72.8

CQS Q values

Q1	Q2	Q3	Q4	Q5	Q6	Q7	Q8	Q9	Q10	Q11	Q12	Q13	Q14	Q15
76.3	94.6	84.1	81.2	83.3	83.4	83.4	86.6	94.9	90.3	87.1	84.0	82.2	69.4	71.8

Color parameters

Color temperature	Color rendering index	Red component	Color fidelity	Color gamut	Color quality scale	Color coordinate cie 1931	Color coordinate cie 1931	Color coordinate	Color coordinate	Color deviation from black body
CCT	CRI	CRI R9	TM30 Rf	TM30 Rg	CQS	x	y	u	v	Δuv
2935 K	82.1	2.2	83.3	95.3	82.0	0.444	0.409	0.253	0.350	0.0012

Beam details

① ② ③ Approx. limits for sources on the Planckian locus.

