

Light efficiency:



Light quality:



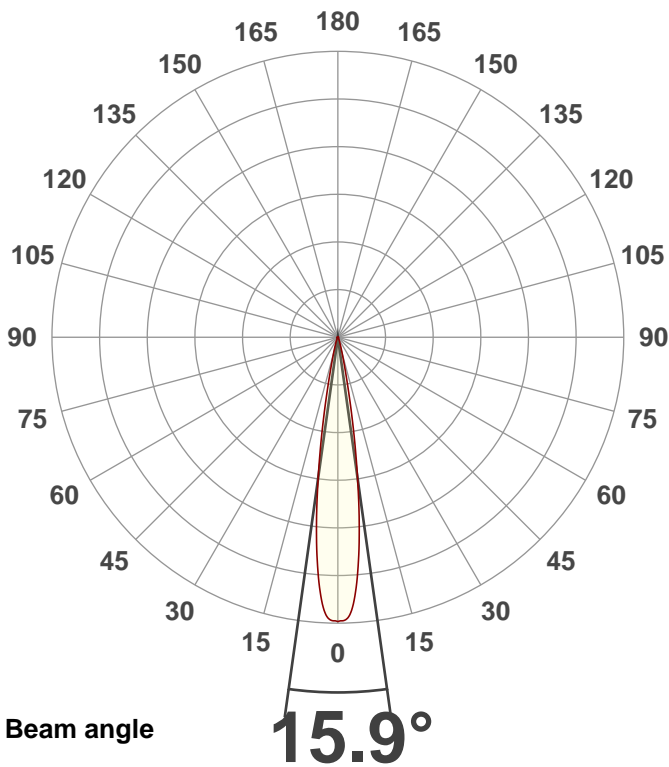
Color temperature:



**Output: 555 lm**  
**Peak: 6017 cd**  
**Power: 7.5 W**  
**PF: 1.0**

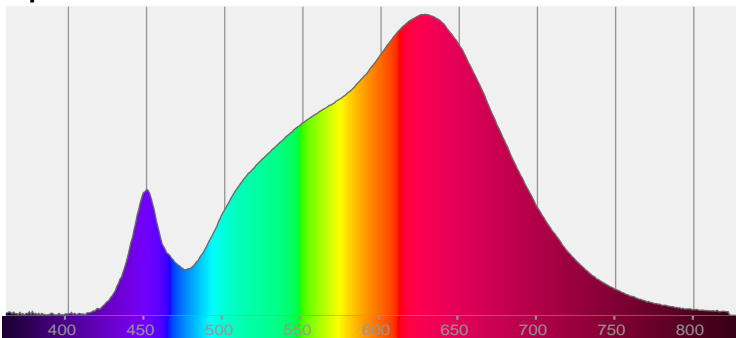


**Product name:**  
**Arcane Module, 3000K, CRI90, 700mA, LV-0%**  
**Item number:**  
**ARC-60-130-30-90**  
**Date and time:**  
**18/07/2018 15:08:34**  
**Description:**

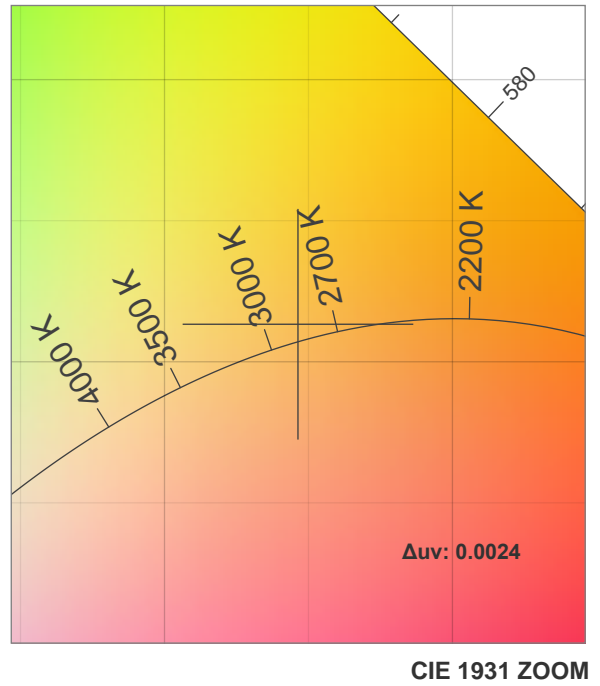
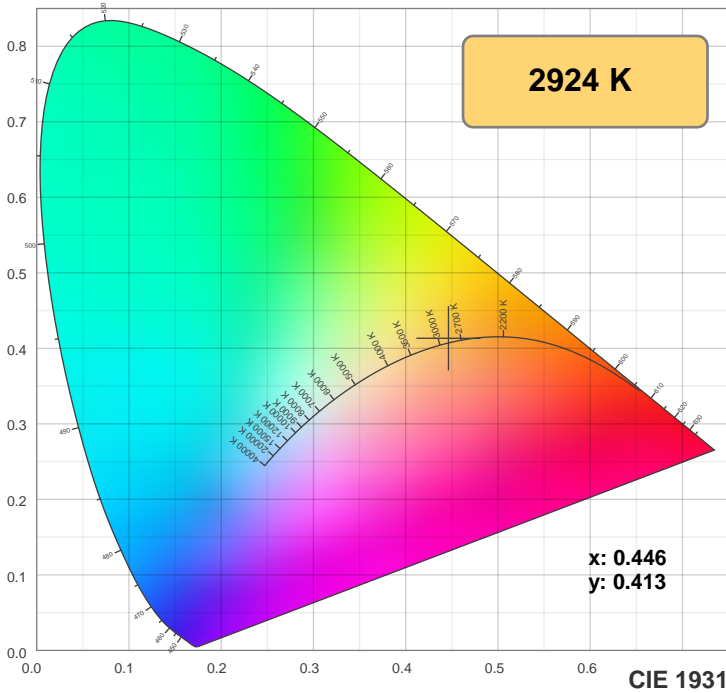


CIE 1931  
 x: 0.446  
 y: 0.413

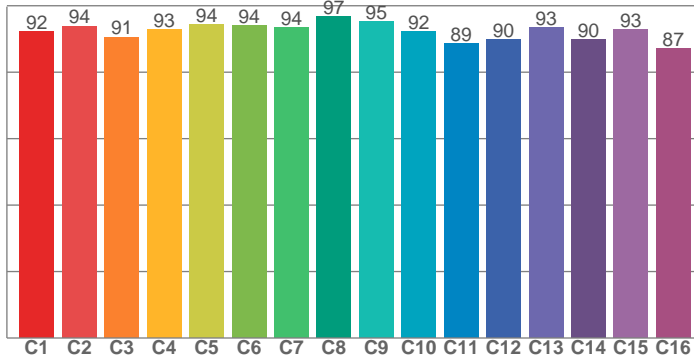
Spectra



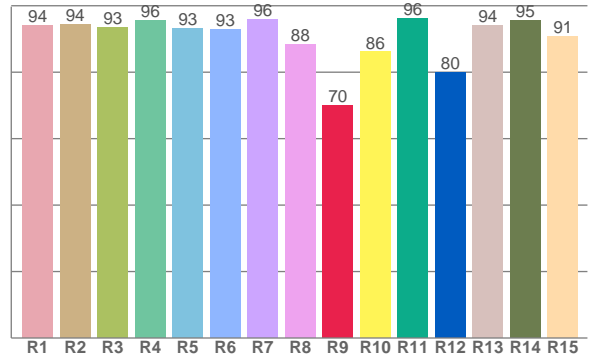
## Color details



**TM30: 92.3**



**CRI: 93.5 (R1-R8)**



**CRI R values, only R1-R8 are used to calculate final CRI value**

R1	R2	R3	R4	R5	R6	R7	R8	R9	R10	R11	R12	R13	R14	R15
94.1	94.5	93.4	95.5	93.1	93.0	95.8	88.3	70.0	86.1	96.1	80.0	94.0	95.5	90.9

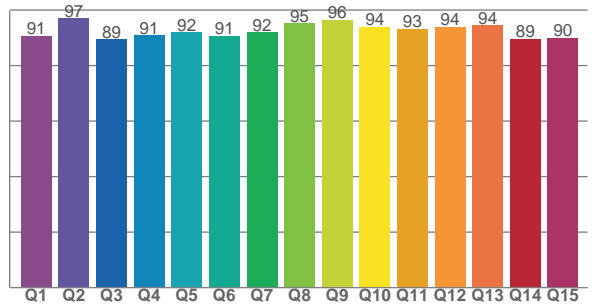
**TM30 C values, 16 binned values out of total of 99 C values**

C1	C2	C3	C4	C5	C6	C7	C8	C9	C10	C11	C12	C13	C14	C15	C16
92.3	93.9	90.6	92.8	94.4	94.0	93.5	96.9	95.3	92.3	88.6	89.7	93.4	89.9	92.8	87.1

**CQS Q values**

Q1	Q2	Q3	Q4	Q5	Q6	Q7	Q8	Q9	Q10	Q11	Q12	Q13	Q14	Q15
90.7	96.9	89.4	90.9	91.9	90.6	91.9	95.2	96.3	94.0	93.1	93.9	94.4	89.5	89.9

**CQS: 92.1**



### Color parameters

Color temperature	Color rendering index	Red component	Color fidelity	Color gamut	Color quality scale	Color coordinate cie 1931	Color coordinate cie 1931	Color coordinate	Color coordinate	Color deviation from black body
CCT	CRI	CRI R9	TM30 Rf	TM30 Rg	CQS	x	y	u	v	Δuv
2924 K	93.5	70.0	92.3	100.6	92.1	0.446	0.413	0.253	0.351	0.0024

## Beam details

