

SWAC-E-CSB-10A

Technical Datasheet for Switching Relay



Description

The SWAC-E-CSB-10A is a AC Switching Relay with Casambi integration, allowing a circuit load to be switched on and off through the use of the Casambi App.

- 10A Relay, 120-277VAC
- Single addressable switched circuit
- Casambi Enabled
- Bluetooth Beacons



Technical Specifications

Mechanical

Housing	Black Plastic Injection Moulded ABS
Dimensions	103mm x 35mm x 28mm
Weight	64g
Protection	IP20
Mounting	Screwdown

Input

Voltage Range	120-277VAC
Frequency	50-60Hz
Max Mains Current	20mA (excluding relay load)
No-load Standby Power	<800mW

Relay Output

Output Voltage	120--277VAC
Max. Output Current	10A
Max Continuous Current	165A/20ms

Radio Transceiver

Operating Frequencies	2.4Ghz - 2.483Ghz
Maximum Output Power	+4dBm
Wireless Protocol	Bluetooth Low Energy v4.1

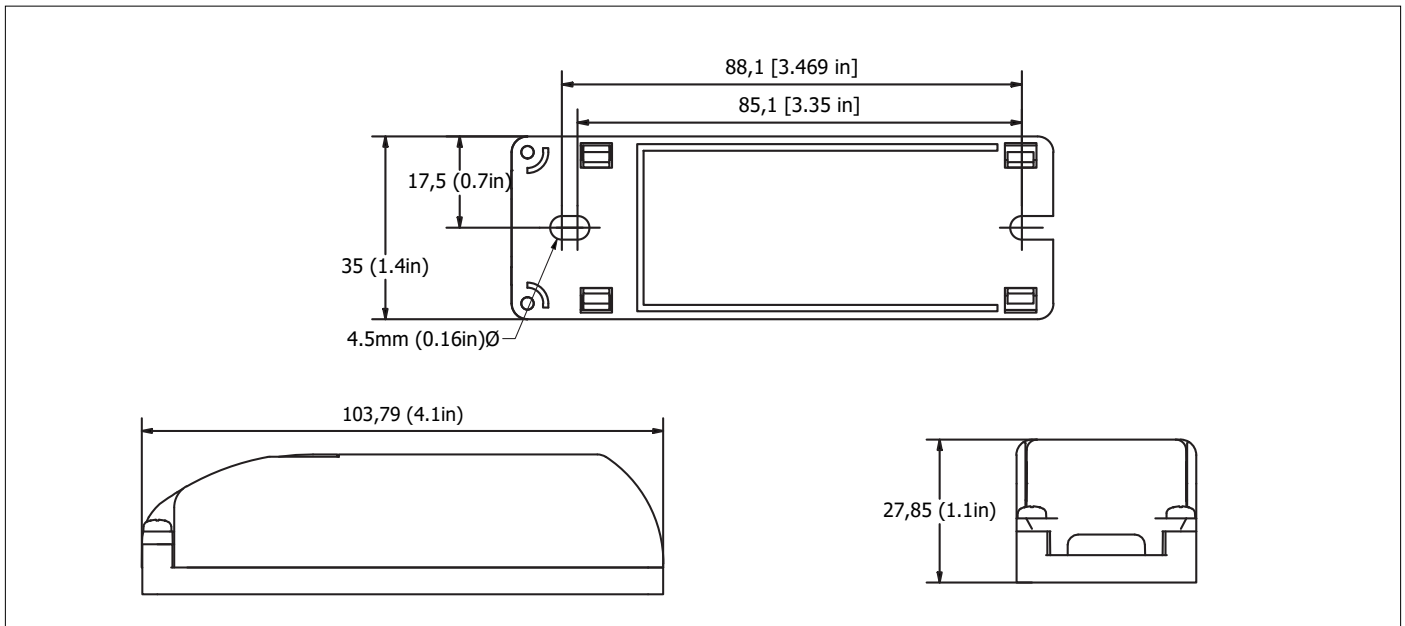
Operating Conditions

Ambient Temperature	0°C to +50°C
Max. Case Temperature	+75°C
Storage Temperature	-40°C to +80°C
Max. Relative Humidity	80% non-condensing

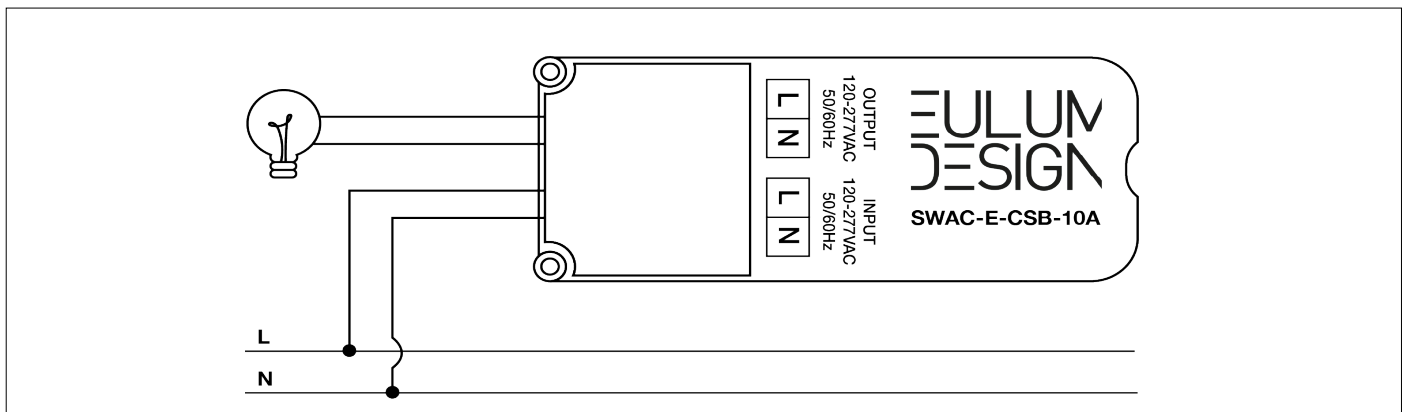
Connectors

Wire Range	0.2mm - 2.5mm
Wire Strip Length	5mm

Dimensions



Wiring Diagram



Range

In open air, the bluetooth range can reach up to 75m. This will be reduced when placed inside a building. Please note that putting the bluetooth unit inside a metal enclosure is unadvised as this will dramatically reduce the signal range.

Compatible Devices:

iPhone iOS and later are supported
 iPad iOS 10 and later are supported
 Android 4.4 version (KitKat) and later are supported.



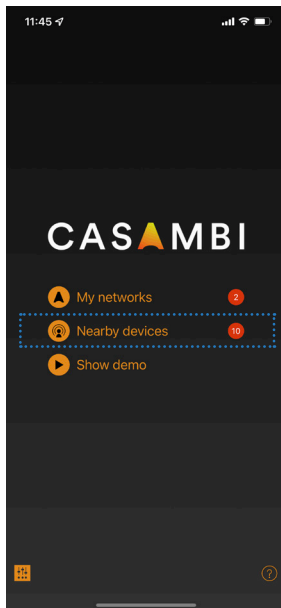
Warranty

For information on our warranty, please visit: www.eulum.com/warranty/

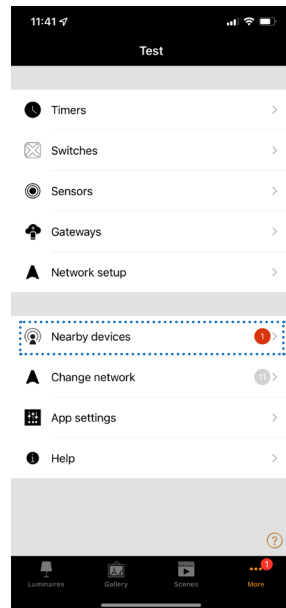
Profiles

Profile Name	Description
SWAC-E-CSB-10A	Single Channel Switch
SWAC-E-CSB-10A-P	Single channel switch using momentary pushbutton
Version	Casambi/Evolution

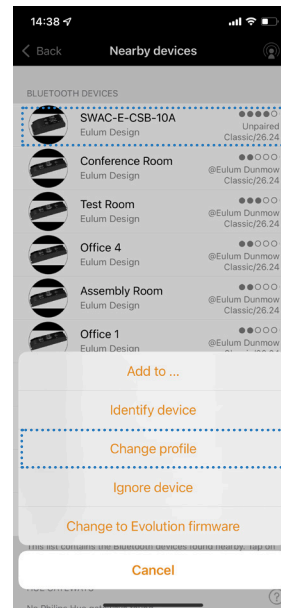
Calibration



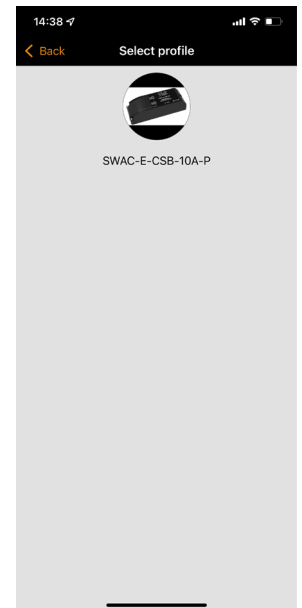
1. Power on the device and open the Casambi App, select “Nearby devices”.



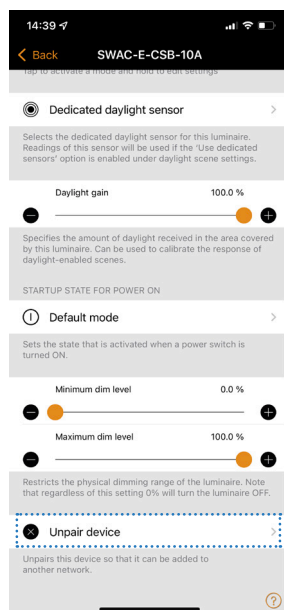
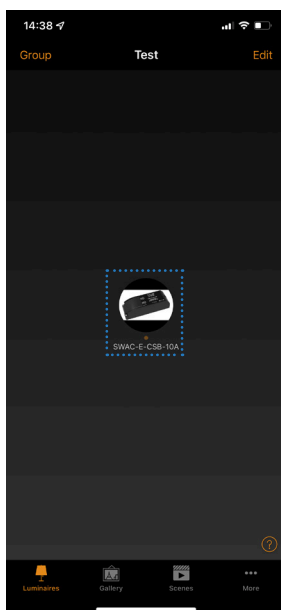
2. Tap “Nearby Devices”



2. Tap the SWAC and then “Change profile”.



4. Choose your desired profile. SWAC-E-CSB-10A is the standard profile and will not show.



NOTE: The SWAC must be unpaired to change the profile. To unpair, double tap the SWAC-E-CSB-10A in the network and scroll to the bottom of the options to “Unpair Device”, then follow step on from Step 1 above.